



WELCOME TO THE WORDSLEY SCHOOL



BELIEVE ACHIEVE INSPIRE



PROSPECTUS 2023-2024

Our school is defined by its culture and ethos - 'the way things happen'.

At The Wordsley School our culture and ethos is our unique selling point and together we strive to fulfil our mission, with a clear vision, motto and five key values that underpin our daily work.

The Wordsley School truly is a special place to be with a kind and supportive atmosphere, encouraging all pupils to achieve their best and this is structured within our Mission, Vision and Values.

MISSION

To provide an outstanding and enjoyable educational experience for everyone in our Wordsley community.

VISION

We promote high levels of aspiration and achievement and support each other to be the best we can be.

VALUES

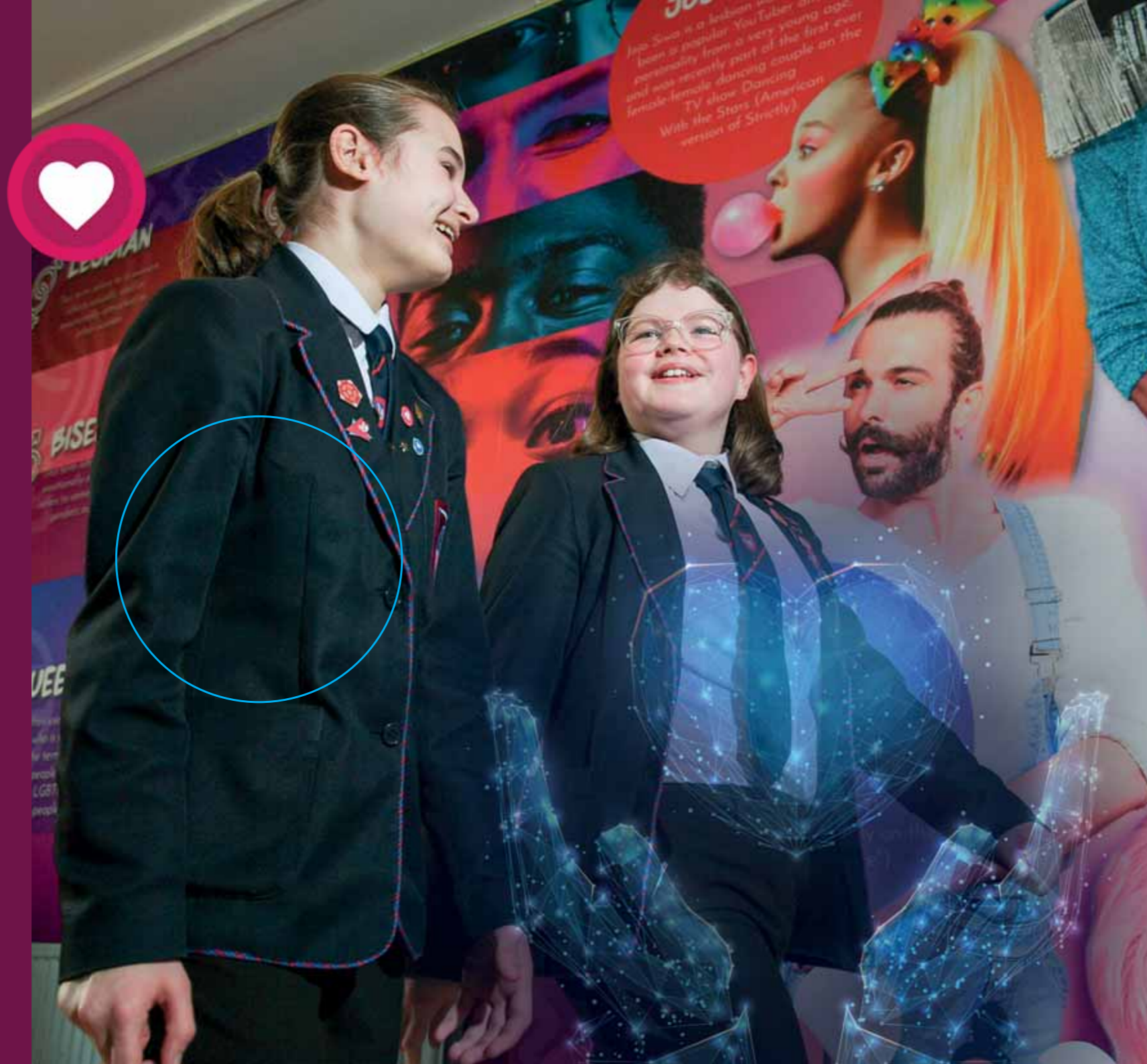
Curiosity - we have enquiring minds and are keen to learn.

Integrity - we are honest and have strong moral principles.

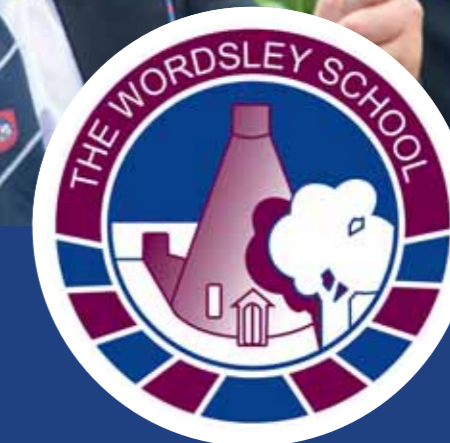
Kindness - we are friendly and considerate of each other.

Resilience - we respond well to challenge and are keen to improve.

Respect - we have an appreciation and awareness of others.



OUR HEADTEACHER



Thank you for considering the Wordsley School for the next stage of your child's journey. As a parent, I know how important this choice is for you and your family. The move to secondary school is an exciting yet nerve-racking one, but please be safe in the knowledge that we will be with you every step of the way.

This support begins right from the outset, where we get to know our young people and help integrate them into the 'Wordsley Way' as part of our extensive primary transition process. On their very first day pupils are sorted into houses and become part of multi-year tutor groups, which become their family during their 5 years with us. No child is ever alone, as they have a variety of people looking out for them, both pastorally and academically.

Once children are happy, safe and secure, they can go on to achieve great things. At Wordsley, we believe that every child has something that makes them unique or special. A talent, attribute or passion that sets them apart. Our aim is to identify, nurture and grow this in order to help them ACHIEVE things they never even thought possible. Our

role is to make them BELIEVE that they can reach these heights and INSPIRE them to want to do so. We expect a lot of our young people, both behaviourally and academically, but we know they are capable of meeting these expectations.

If this sounds like the right environment for your child, then please come and have a look at what we do. Our Open Evening and Open Mornings will provide you with the perfect opportunity to meet our talented and dedicated staff. It will also help you to see our wonderful students, who are the very best advertisement for what we do here at Wordsley. I hope to see you there.

Ashley Weatherhogg
Head Teacher



SCHOOL LIFE

Attitude to Learning

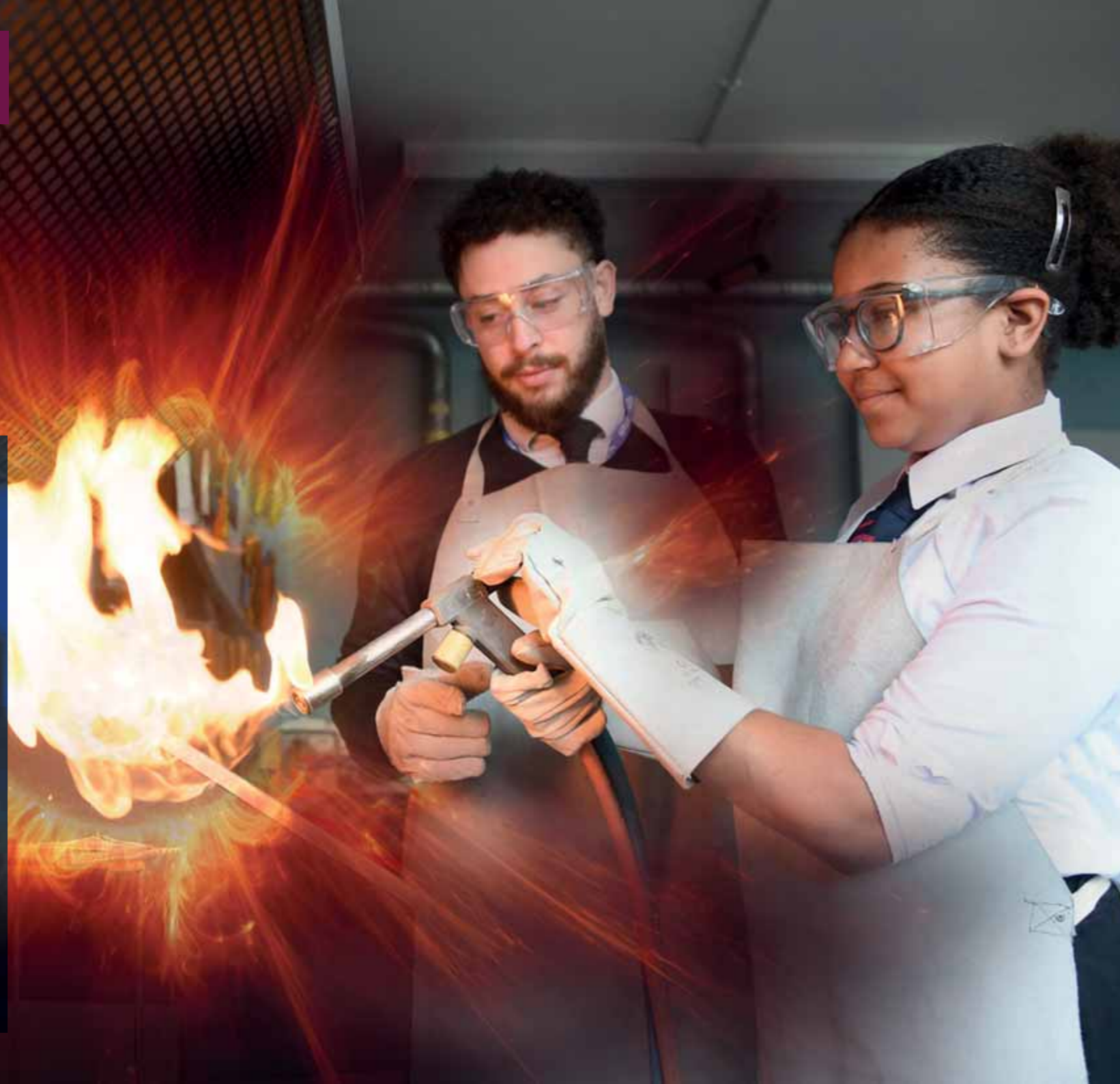
There is a buzz for learning across the school, with focus on high expectations for learning and behaviour, supporting students to realise their potential to achieve their goals, develop skills and attributes that are essential for all that lies ahead.

Our learning environment has an impressive mix of determination, enthusiasm, and enjoyment, fused with inspirational teaching.

Home Learning

Homework is an essential complement to lessons, extending the opportunity for pupils to reinforce their understanding of subject matters; preparing pupils to learn and thrive independently.

We place great emphasis on developing our partnership with parents and the encouragement to support their child with managing their homework.



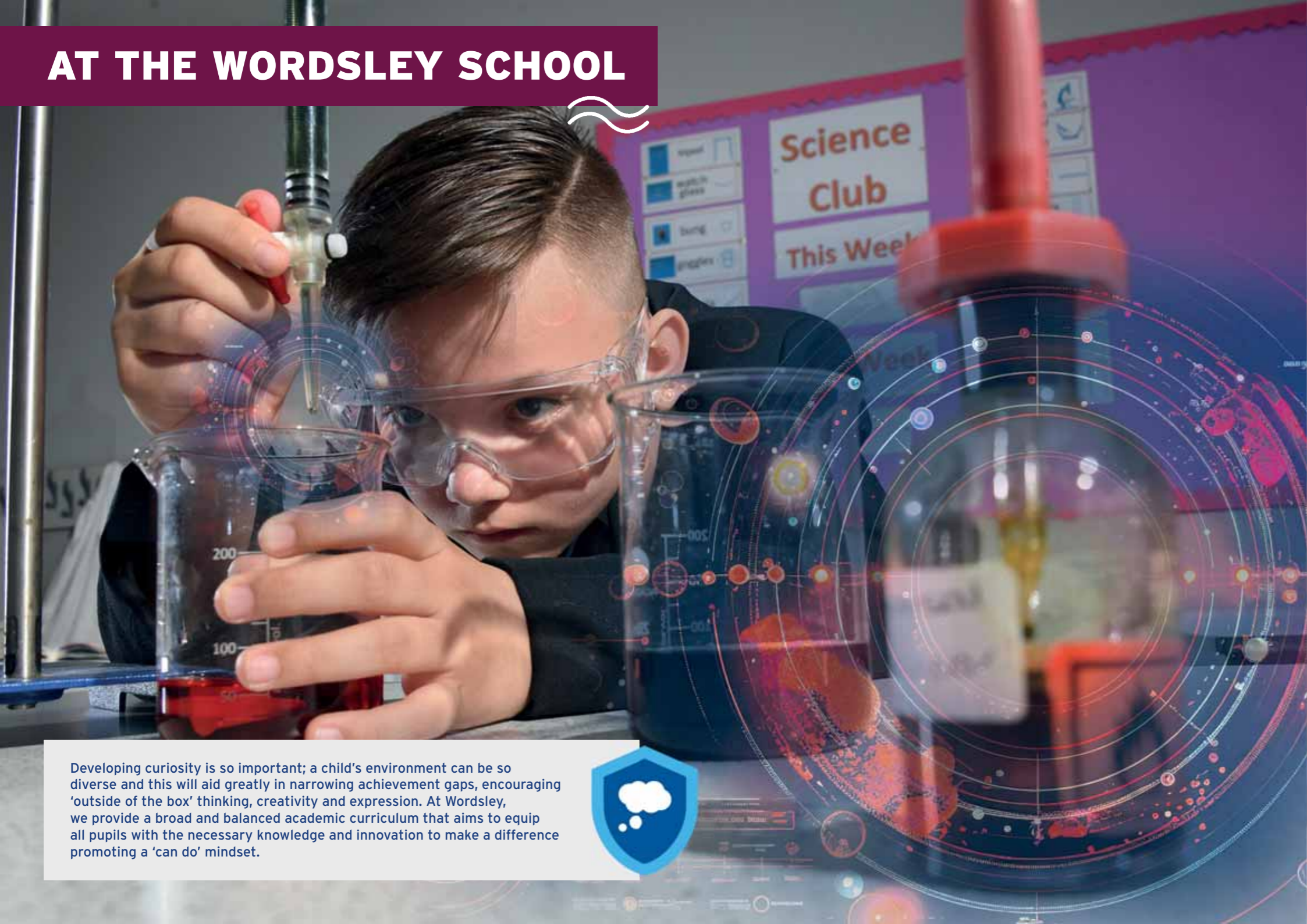
LITERACY & READING



The key Literacy skills areas of reading, writing, speaking and listening are at the heart of the curriculum at The Wordsley School, as these are vital skills which underpin all learning. Such skills will vary for pupils as they learn and develop within various subject specialisms. We strive to ensure that pupils are aware of these important skills and they are fully supported to utilise and develop them in all their lessons.

At Wordsley we value and promote the importance and pleasure of reading, we have a modern, spacious and well stocked Library. Key Stage 3 pupils all have one lesson per week which is dedicated to reading and based in the Library. Key Stage 3 pupils also participate in the Accelerated Reader programme, which not only monitors pupils' progress and helps them to develop their reading skills, but also motivates pupils to read engaging and appropriately challenging text.

AT THE WORDSLEY SCHOOL



Developing curiosity is so important; a child's environment can be so diverse and this will aid greatly in narrowing achievement gaps, encouraging 'outside of the box' thinking, creativity and expression. At Wordsley, we provide a broad and balanced academic curriculum that aims to equip all pupils with the necessary knowledge and innovation to make a difference promoting a 'can do' mindset.

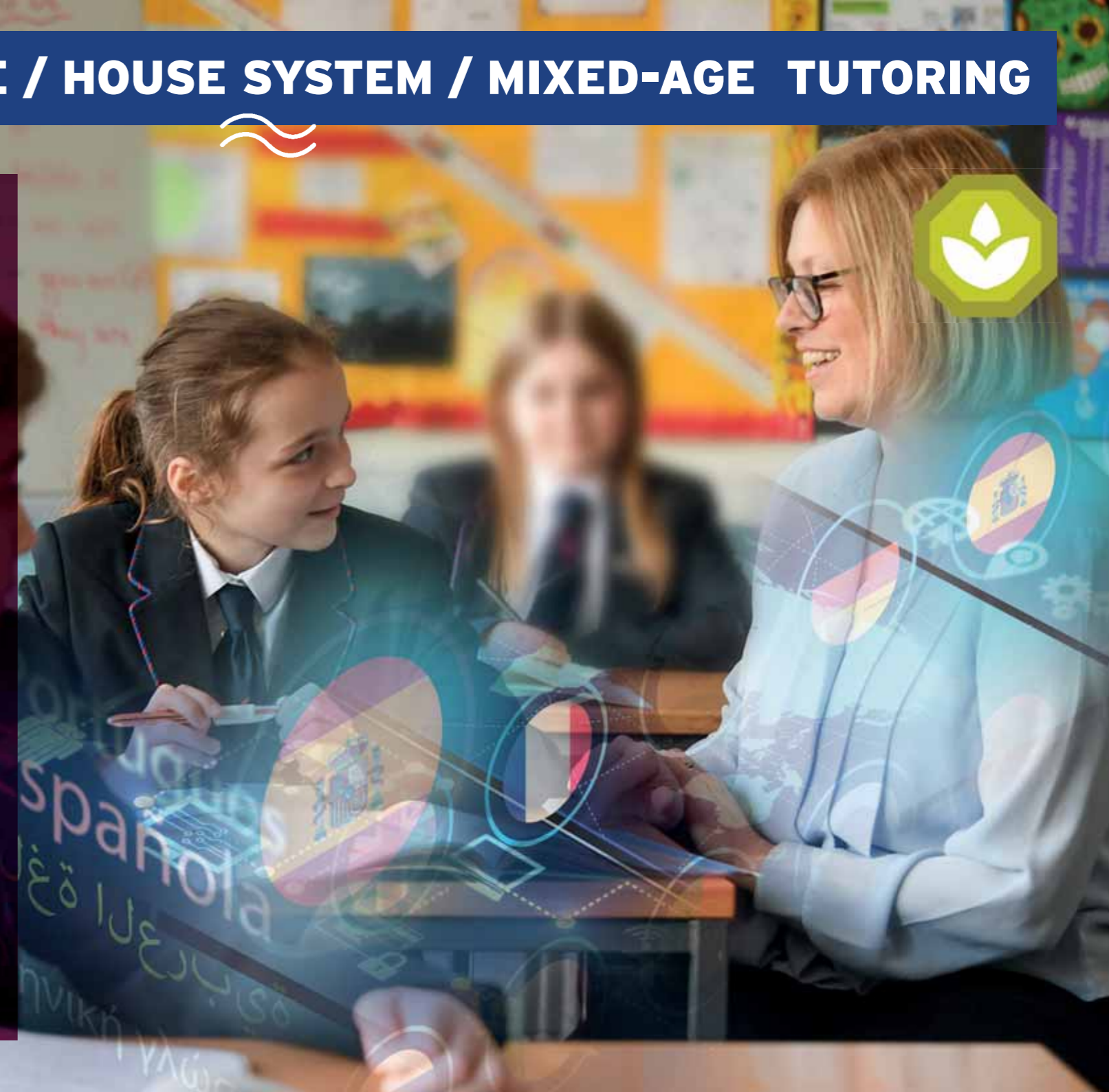


PASTORAL CARE / HOUSE SYSTEM / MIXED-AGE TUTORING

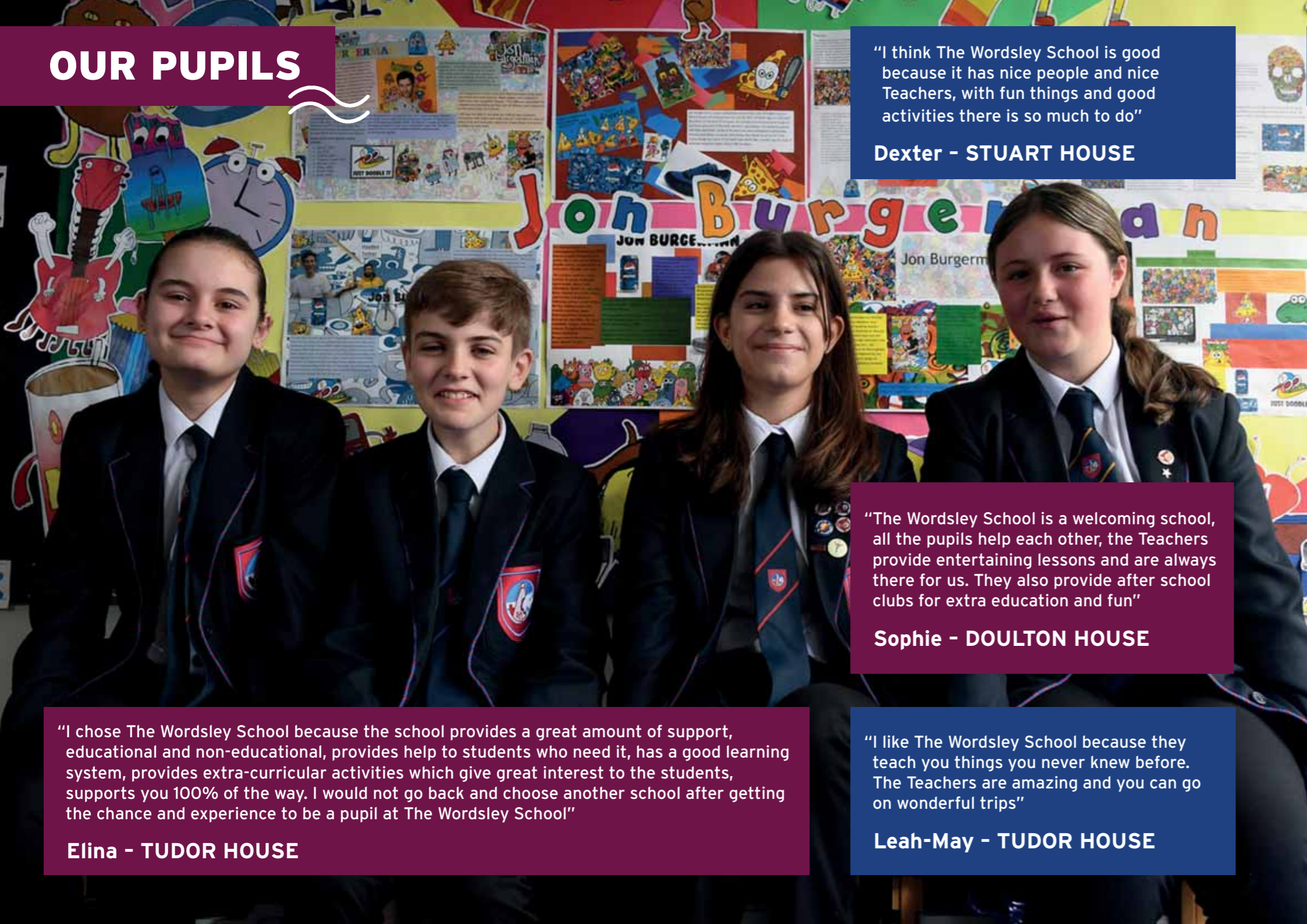
The backbone of our school is the strong pastoral system that is in place to nurture and support our pupils. Our pastoral system comprises four houses, each of which have names which connect the school to the local glass industry, which is known worldwide. The four houses are: Doulton, Stuart, Tudor and Webb. Each house has seven tutor groups, each consisting of pupils from the five different year groups.

Pupils have two periods each day where they meet as a tutor group. Firstly, every morning between 8.35 am and 8.55 am and then later in the day between 1.15 pm and 1.25 pm. In these tutor periods, pupils from different year groups build positive, healthy relationships with each other, which nurtures an enhanced sense of family and community between our pupils from their first day. Our older pupils are provided with opportunities to act as role models for our younger pupils and conversely, our younger pupils are afforded the opportunity to have meaningful conversations with older pupils about school life and future aspirations.

Our 'mixed-age tutor groups' have proved very popular with both pupils and parents over the years. Children from the same family are usually placed in the same tutor group, which helps us to retain excellent communication between school and home, and nurture a strong partnership to support our pupils over the five years they are with us. The tutor will normally be the first point of contact for parents at the school.



OUR PUPILS



"I think The Wordsley School is good because it has nice people and nice Teachers, with fun things and good activities there is so much to do"

Dexter - STUART HOUSE

"The Wordsley School is a welcoming school, all the pupils help each other, the Teachers provide entertaining lessons and are always there for us. They also provide after school clubs for extra education and fun"

Sophie - DOULTON HOUSE

"I chose The Wordsley School because the school provides a great amount of support, educational and non-educational, provides help to students who need it, has a good learning system, provides extra-curricular activities which give great interest to the students, supports you 100% of the way. I would not go back and choose another school after getting the chance and experience to be a pupil at The Wordsley School"

Elina - TUDOR HOUSE

"I like The Wordsley School because they teach you things you never knew before. The Teachers are amazing and you can go on wonderful trips"

Leah-May - TUDOR HOUSE

YOUR FUTURE / CAREERS



"A culture of warmth and friendliness and welcome is evident throughout the school"
Ofsted

From the beginning of Year 7, one of our priorities is to provide pupils with excellent information, advice and guidance regarding their Post-16 opportunities and future careers.

During KS3, pupils take part in employability workshops which aim to encourage pupils to review their own skills and qualities and stimulate their curiosity about further education and career prospects.

In KS4, all pupils carry out a Work Experience placement which is completed during Year 10. This aims to develop their independence, resilience and employment knowledge. Year 10 pupils are also encouraged to begin researching Post-16 choices and will attend a range of informative and thought-provoking workshops to support with this. During Year 11, pupils can make appointments with the Careers Co-ordinator and the school's Connexions Advisor to discuss their Post-16 decisions. They will also be regularly notified of college news and events throughout the year via assemblies and The Wordsley School website.

EXTRA CURRICULAR



As well as achieving academic success, we are determined that pupils enjoy school life and have fun. This is seen through a wide range of extra curricular activities which pupils want to be involved in.

We aim to unlock hidden potential, allowing pupils to flourish whether they are budding musicians, sportsperson or artist, they will be supported and encouraged to enjoy whatever their level of experience.

Broadening cultural awareness with opportunities to travel, which nurture and develop knowledge and understanding within international communities. Pupils have recently enjoyed trips to Calella, Disneyland Paris and the USA.



Learning4Life are part of The Wordsley School, providing learning activities for pupils, parents and for the community. Offering Adult Education courses in an array of subjects and qualifications, First Aid / Paediatric, Swim Teachers, National Rescue Awards, Food Safety, Pottery, Tai Chi, broad spectrum of IT related learning, Painting, Upholstery, Sewing, Creative Writing, Flower Arranging, Languages, Mindfulness, Swimming and other fitness activities, Guitar, Photography just to name a few. We also work closely with neighbouring schools to develop Family Learning programmes to improve children's attainment and increase opportunities for participating families in a variety of activities.

Learning4Life run a highly successful Swim School offering lessons to children throughout the term on a weekly basis, also offering one to one lessons.



To find out more give us a call on 01384 816043 or view the website www.learning4life.co.uk



Our new English Suite, School Library and Sports Hall have enhanced our capacity, with improved resources to allow us to further invest in high quality teaching and learning.

These exceptional facilities are also available for hire for indoor football, badminton, tennis, netball, basketball and cricket. With the addition of our outdoor multi-use games area which will also accommodate such sporting activities.

Extensive grounds also accommodate full sized football pitches and changing facilities, Performance Studio housing various types of gym equipment and swimming pool area for swimming clubs and hosting of children's parties, all available for hire.



The Wordsley Pre-school and Playgroup

A wonderfully supportive environment dedicated to stimulating young minds. Offering daily sessions Monday to Friday. For more information please contact Angela on 01384 918740.



It's key to keep in touch to support your child's learning.



Access The Wordsley School website to find the latest updates, term dates, curriculum details and relevant policy information.

Follow us on Twitter, Instagram and Facebook to see all the latest news.

Contact can be made via email at info@wordsley.dudley.sch.uk. For curriculum queries email contact can be made to subject teachers. With other concerns being directed via email to your child's tutor. Arrangements can be made to support any face to face meetings to discuss any concerns you may have.

Annual Parents and Carers Evenings will also give you the opportunity to meet with subject teachers to discuss your child's progression.

Our Parent App aids support in tracking attendance, timetables and alerts you to key notifications. Payments for lunch, extra curricular activities and other arranged ventures can also be accessed via ParentPay.

School Uniform Suppliers

Totally Uniform
01384 270498
www.totallyuniform.co.uk

Crested Schoolwear
01384 918330
www.crestedschoolwear.co.uk

Maple Workwear
01384 212151
www.mapleworkwear.co.uk

